

Want more revision exercises? Get [MathsFit HSC Mathematics](#) for \$2.95/topic

2016 9

1

What is the value of  $\int_{-3}^2 |x+1| dx$ ?

(A)  $\frac{5}{2}$

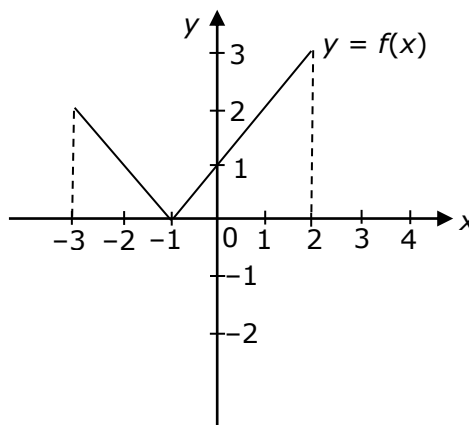
(B)  $\frac{11}{2}$

(C)  $\frac{13}{2}$

(D)  $\frac{17}{2}$

C

$$\begin{aligned} \int_{-3}^2 |x+1| dx &= \frac{1}{2} \times 2 \times 2 + \frac{1}{2} \times 3 \times 3 \\ &= 6\frac{1}{2} \\ &= \frac{13}{2} \end{aligned}$$



State Mean:  
**0.19**

\* These solutions have been provided by [projectmaths](#) and are not supplied or endorsed by BOSTES.